

T&E travel policy

Final 2023 reporting and 2024
climate budget



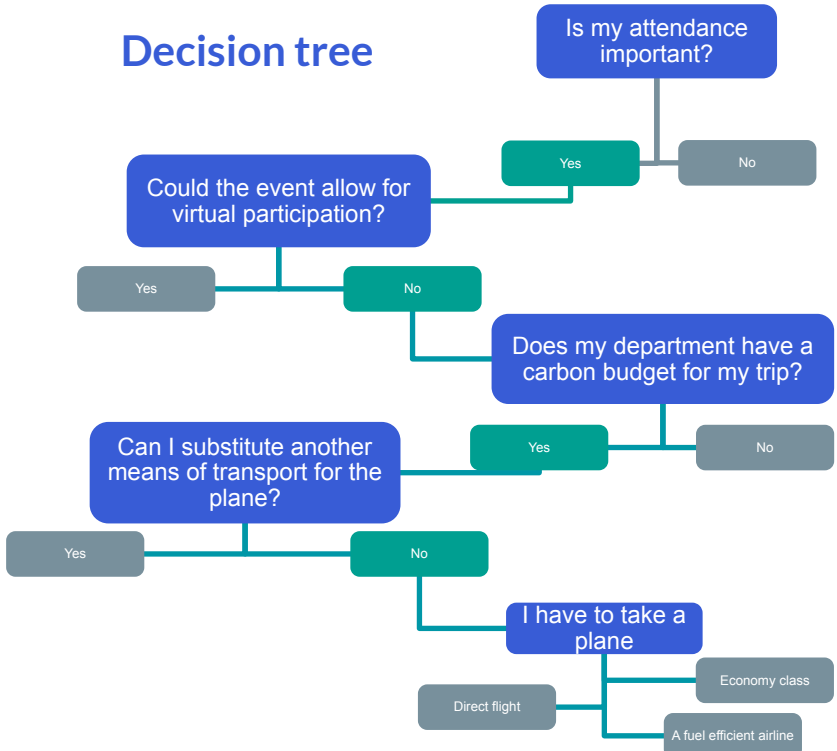
Travel Smart

**Fly less,
achieve more**

Global air travel is the most climate-intensive form of transport

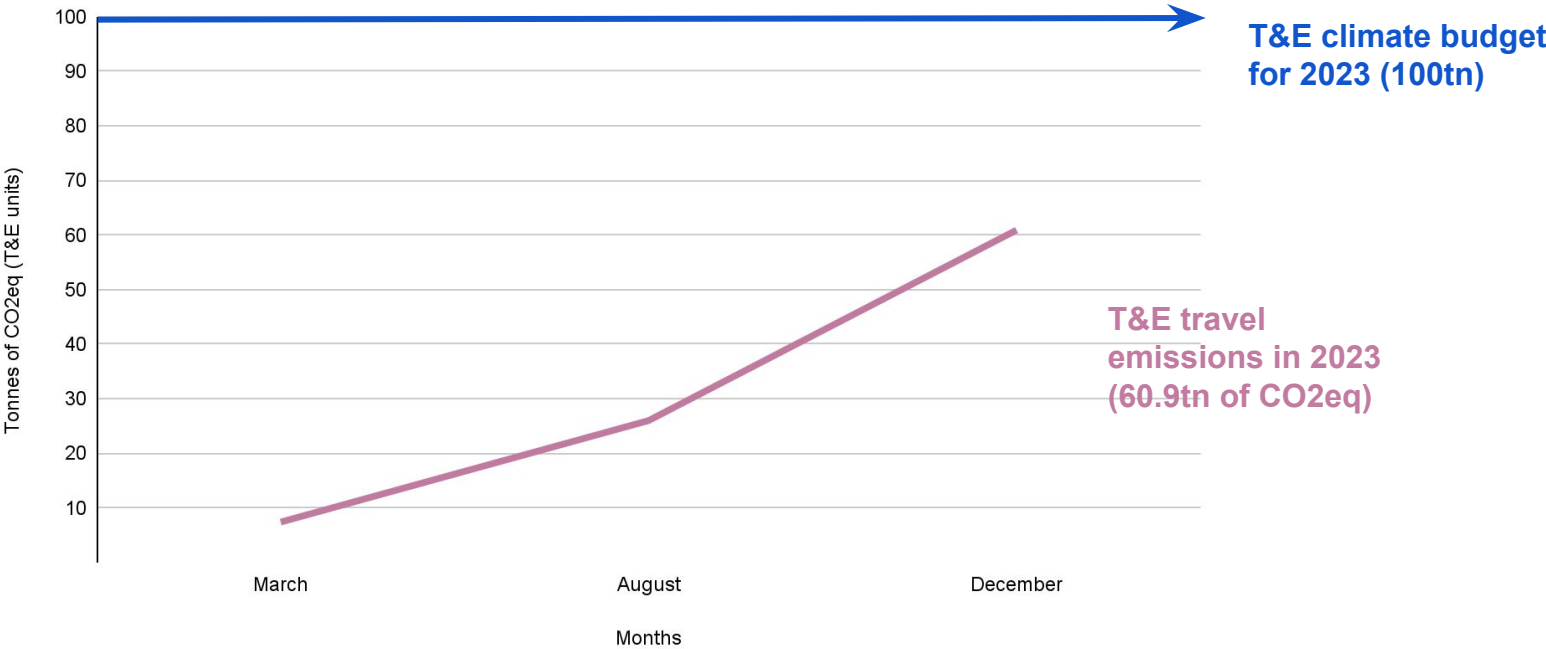
Business travel represents approx. 15-20% of global air travel

Decision tree



T&E climate impact from flying in 2023

T&E 2023 travel climate emissions



T&E travel emissions in 2023 (60.9tn of CO2eq)

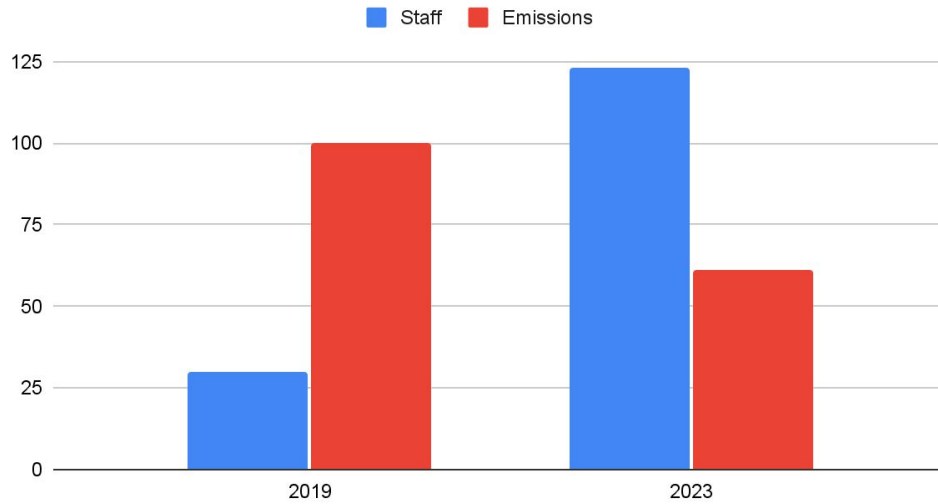
T&E climate budget for 2023 (100tn)

T&E uses a non-CO2 factor of 3



T&E climate impact from flying 2019 vs 2023

T&E staff and climate emissions 2019 vs 2023



Between 2019 and 2023
T&E has reduced its travel
climate impact by **39%** while
its staff increased by **310%**.



T&E 2024 climate budget: 20% reduction

